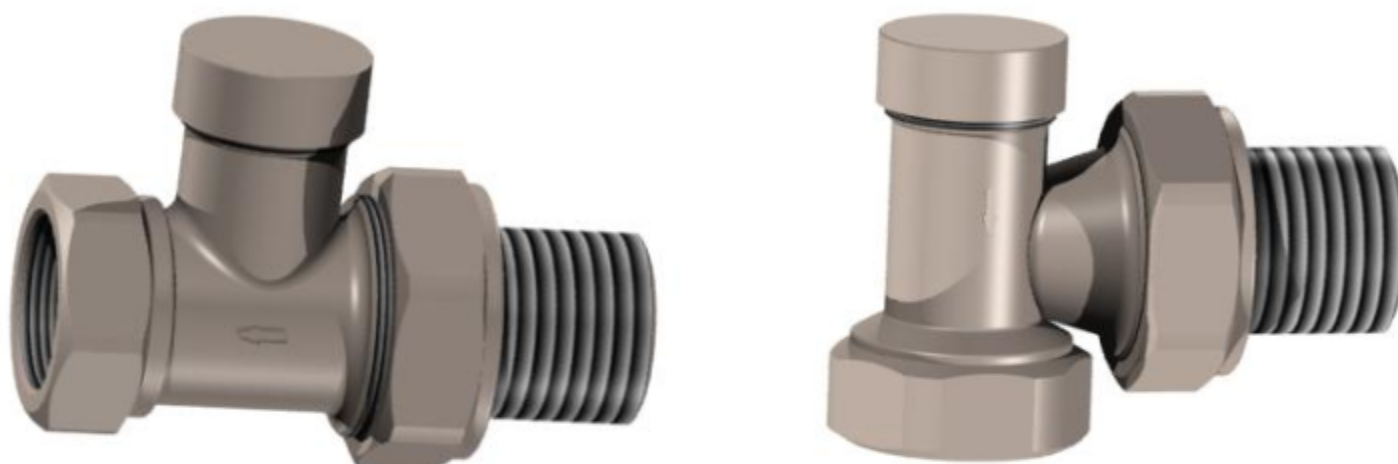


## DATA SHEET

### valves NGE 15 straight and angled

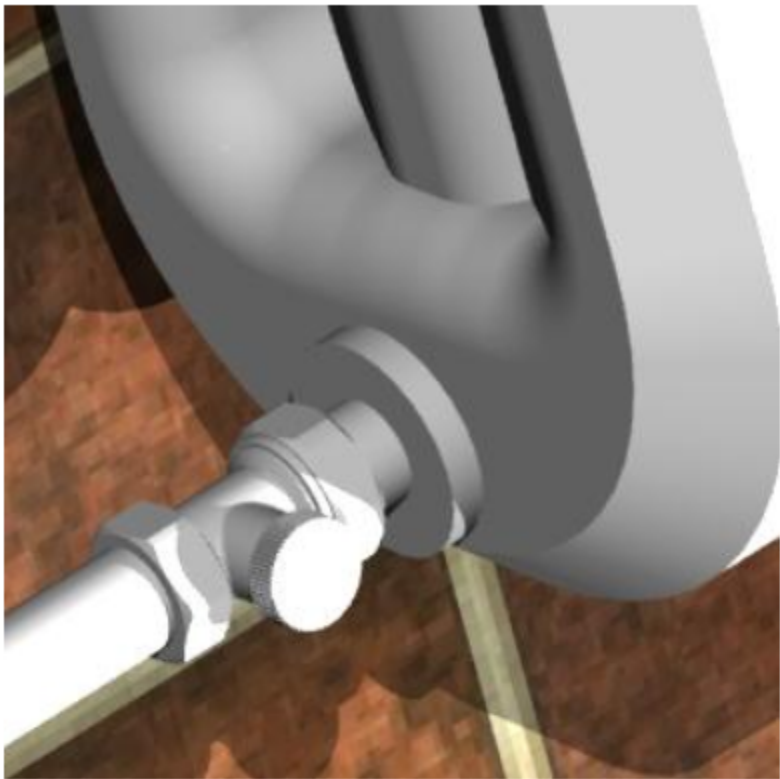
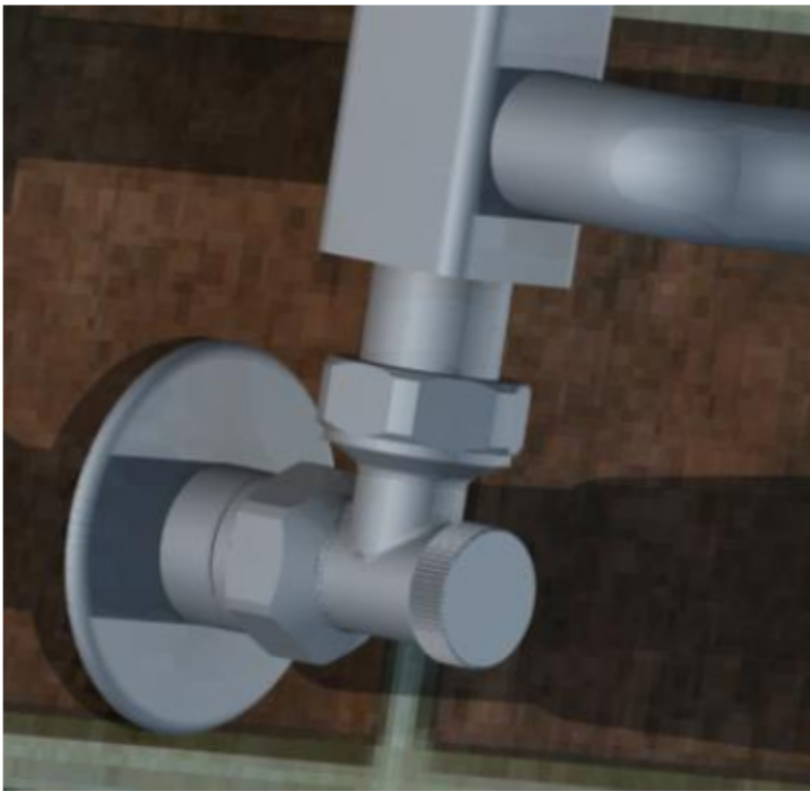


## APPLICATION

Valves straight and angled ECON series are designed for lateral radiators powered systems installed in a central heating system with forced circulation of the heating medium on the side of the return line. Powered systems installed in a central heating system with forced circulation of the heating medium on the side of the return line. They ensure precise balancing of each radiator circuit, which improves thermal comfort and better performance of thermostatic valves.

## TECHNICAL DATA

Working temperature	up to 120 °C
Nominal pressure	1MPa
Heating factor	water
Pressure difference	0.06 MPa
Radiator connector	R 1/2



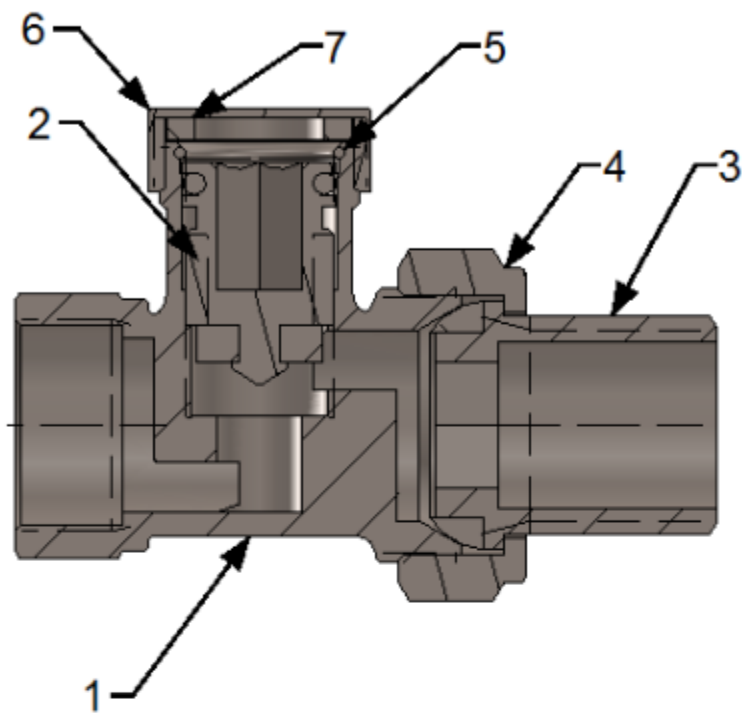
Kv value for a given number of turns				
Number of turns in the direction of opening the valve	2	3	4	Kvs
Kv	0.17	0.28	0.75	1.45

**Attention:**

The valves are factory-set to open. To change the presetting, first turn off the shut-off valve, and then starting from the position of the closed valve, unscrew to the left by the appropriate number of revolutions to obtain the desired amount of Kv shown in the flow diagram above.

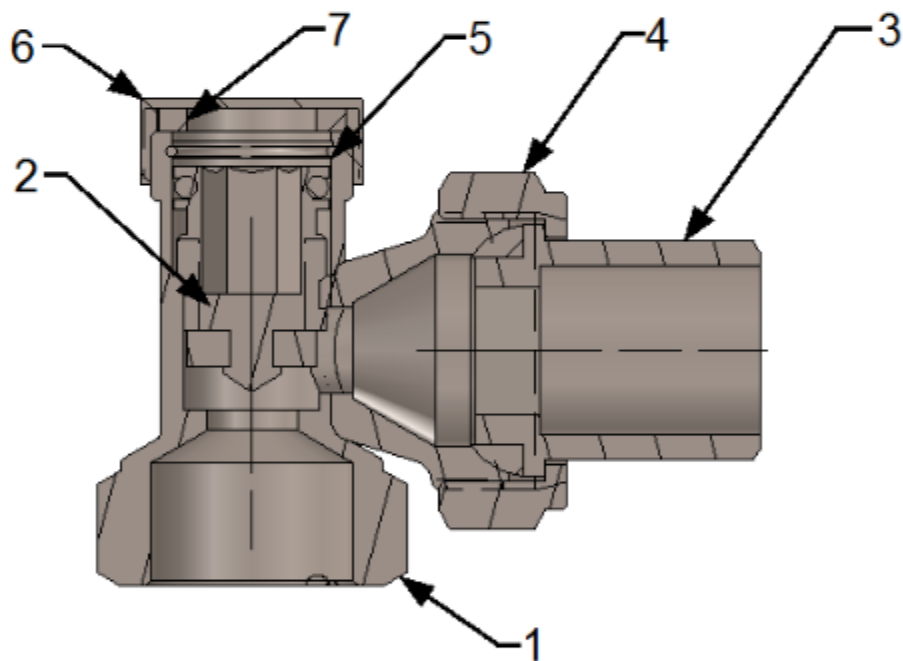
## Construction of the shut-off valve ECON

EDN 15 straight



1. Body of the valve straight stop ECON
2. Mushroom assembly
3. Coupling end - complete
4. Coupling nut
5. Locking ring
6. Cap
7. .. Rubber gasket

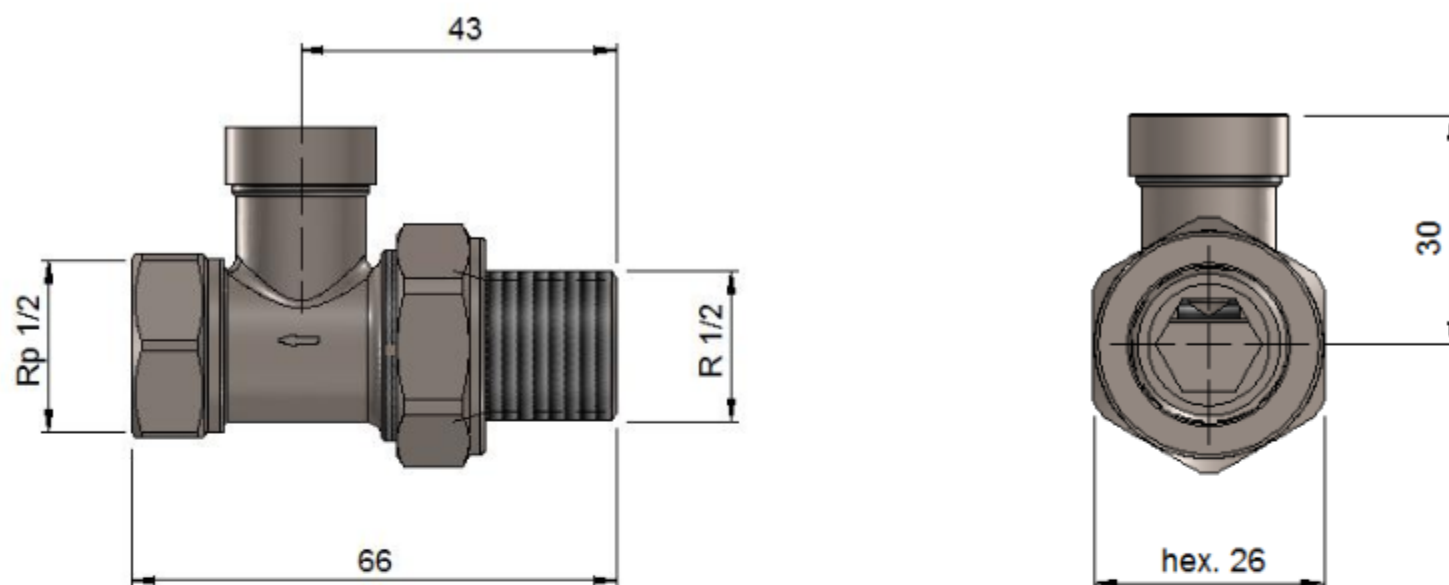
EDN 15-angle



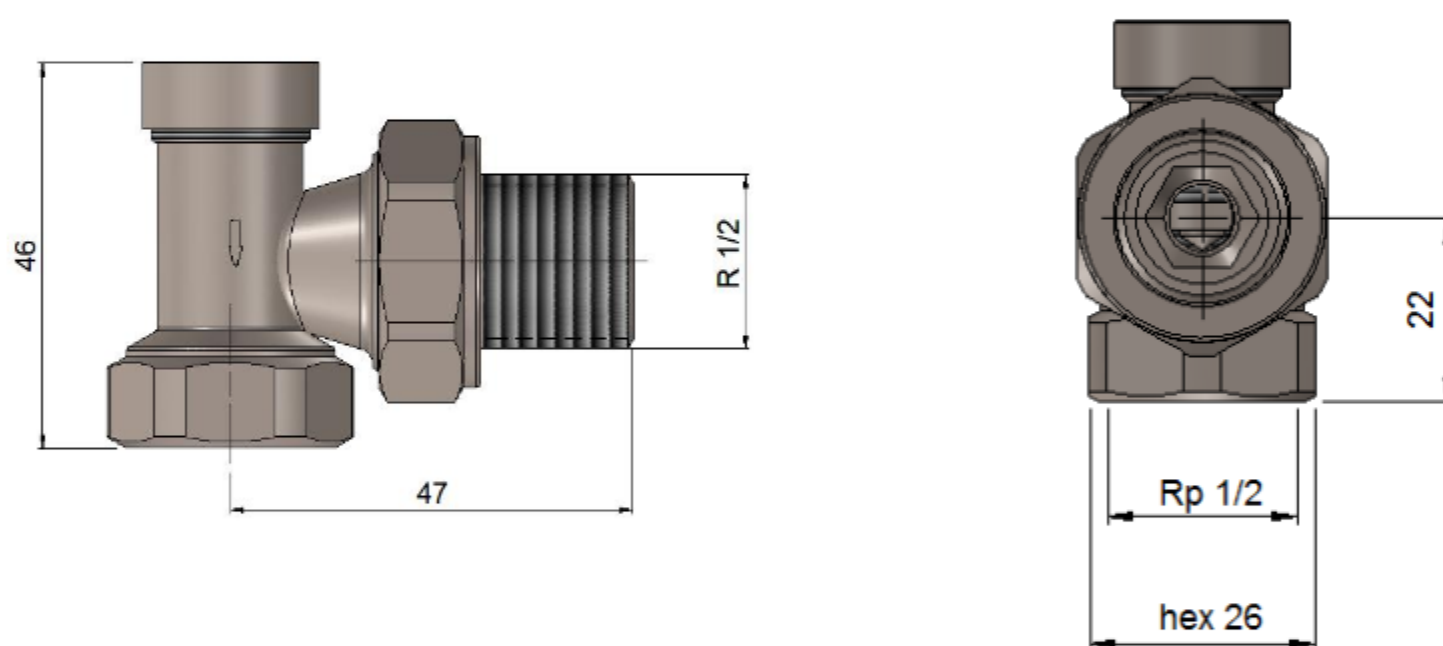
1. Body of the ECON angle stop
2. valve Mushroom assembly
3. Complete coupling end
4. Coupling nut
5. Locking ring
6. Cap
7. Rubber seal

## DIMENSIONS

Shut-off valve EDN 15 straight



Shut-off valve EDN 15 angle



## PERFORMANCE

All color performance available on [www.varioterm.pl](http://www.varioterm.pl)

## CONNECTION ACCESSORIES

(useful for connecting the valve and aesthetic finish of the installation)

	Masking rosettes ½ "or ¾"
	Extension GZ ½ "on GZ ½" (various lengths)
	Extension GZ ½ "on GW ½" (various lengths)
	16x2 screw connection on GZ ½ "
	15x1 screw connection on GZ ½"