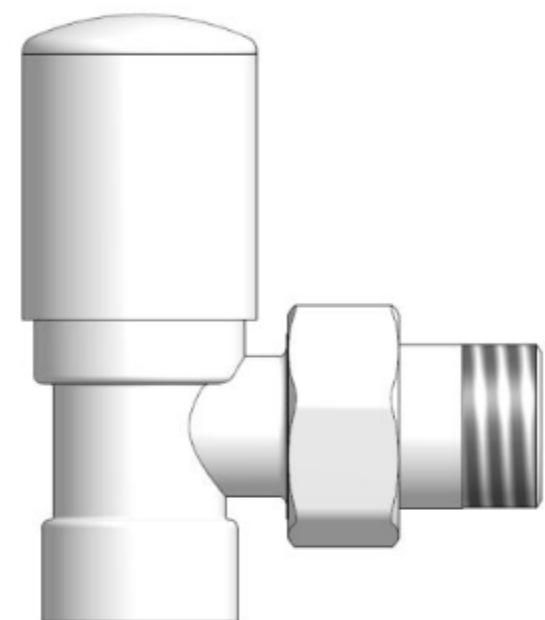
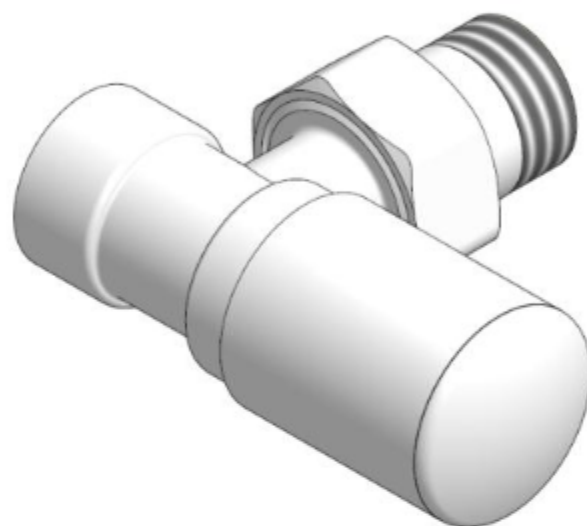
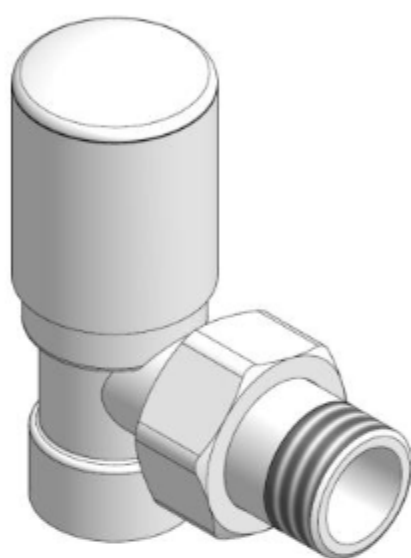


DATA SHEET

SWING valves Angle



SPECIFICATION

Valves SWING series are intended for installation on a radiator (the bathroom or decorative) installation of central heating in two-pipe on the side of the cable outlet. The control valve is capable of controlling the flow of liquid refrigerant heating flowing into the radiator. By increasing the amount of heat across the water supplied to the radiator valve maintains the temperature in the room, and reducing the amount of flowing water decreases the temperature. This adjustment allows you to maintain a comfortable temperature in the room regardless of the prevailing weather conditions outside, and a significant reduction in heating costs by reducing energy consumption.

at the same time contributes to



SPECIFICATION

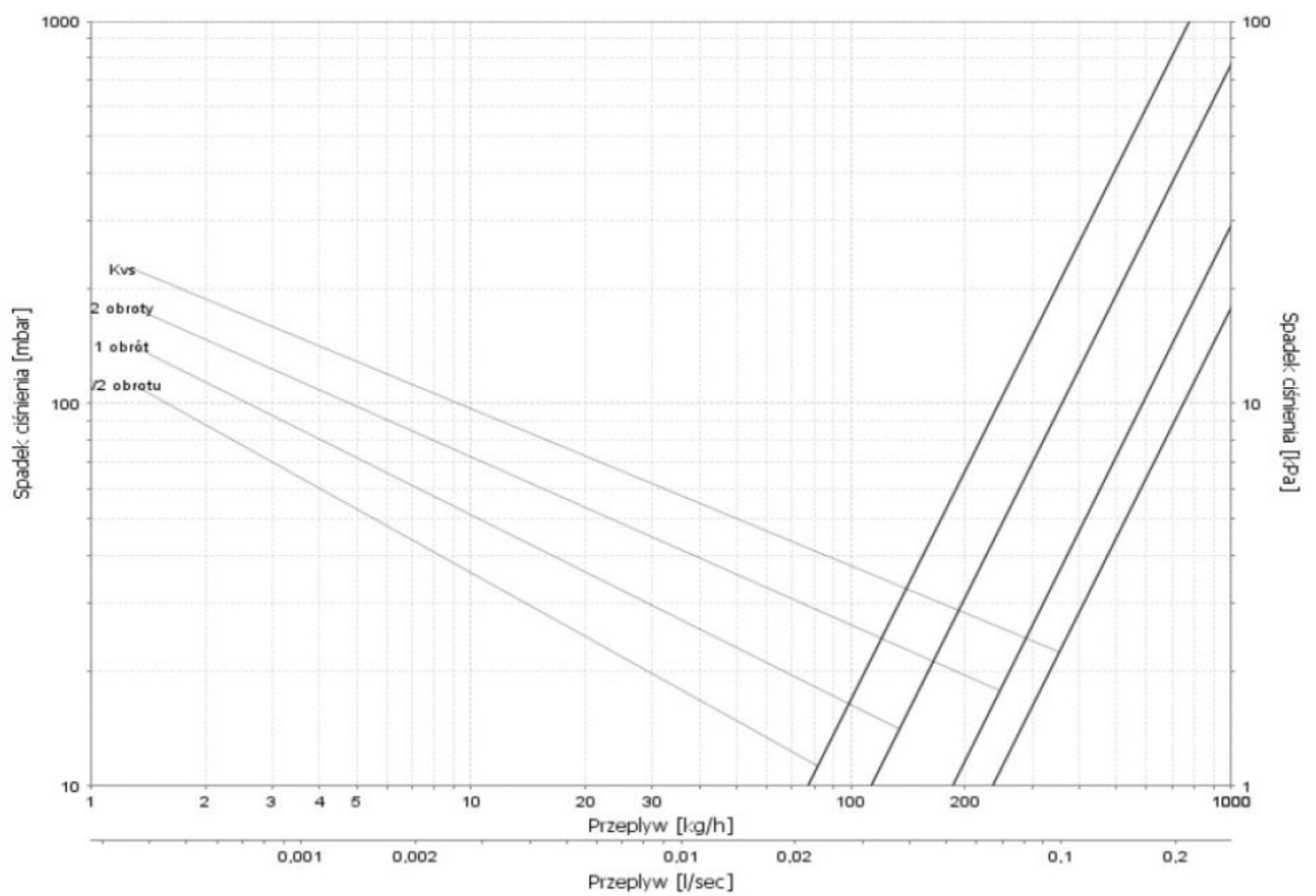
Working temperature	120 °C
Nominal Pressure	1 MPa
Heating factor	water
Pressure difference	0.06MPa
Radiator connection	R 1/2

flow characteristics of the valve for the swing version regulatory

control valves SWING 1

have options for pre-setting.

Setting the implementation of



the Kv value for the number of revolutions				
Number of revolutions in the direction of opening the valve	1.2	1	2	KVS
Kv	0.77	1.13	1.85	2.37

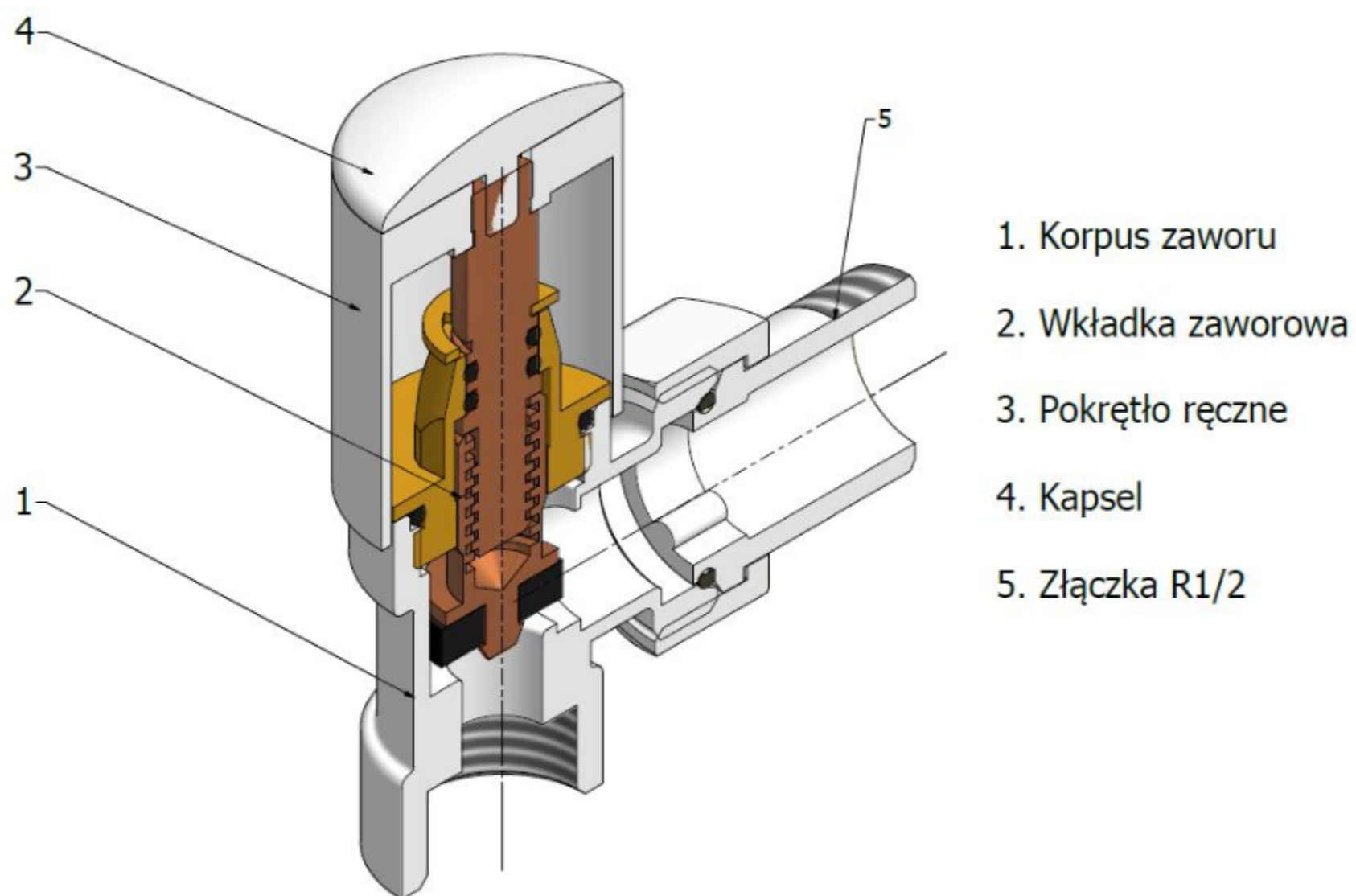
Note:

-Zawory SWING 1 are set at the factory in the open position.

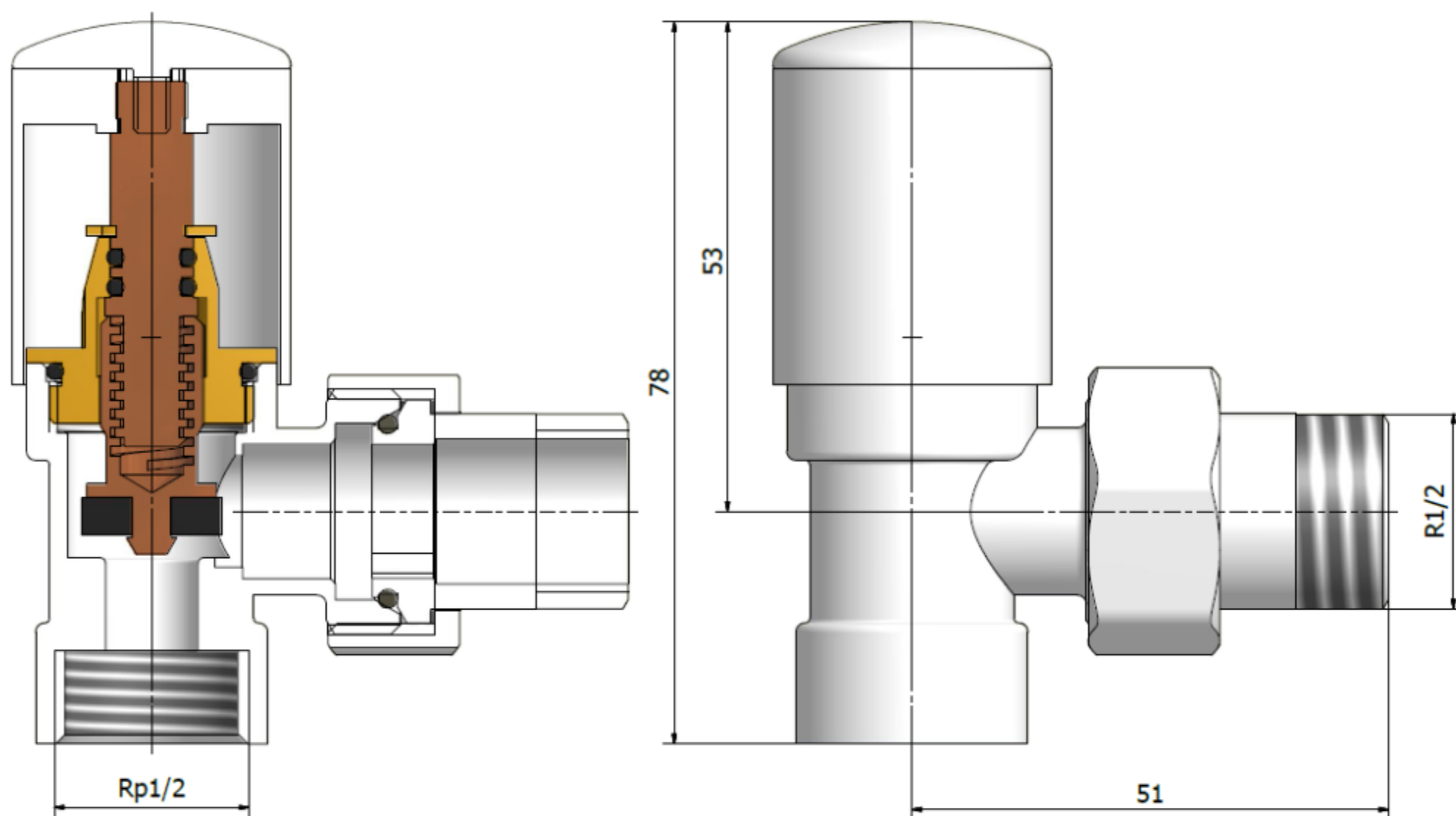
-Zawory regulatory SWING 1 have the ability to set the initial setting.

The realization of the presetting is done by unscrewing the adjustment knob of the closed position, a desired speed (flow characteristic). Thanks to obtain specific capacity of the valve (valve capacity as a function of drop in pressure) for each position of the valve disc using the number of revolutions of the dial.

The construction of the control valve 1 SWING



DIMENSIONS






PERFORMANCE

All color performance available on www.varioterm.pl

ACCESSORIES CONNECTION

(useful for connecting the valve trim and aesthetic installation)

	Rosettes masking 1/2 "or 3/4"
	Extension GZ 1/2 "male thread on 1/2" (various lengths)
	Extension GZ 1/2 "on GW 1/2" (various lengths)