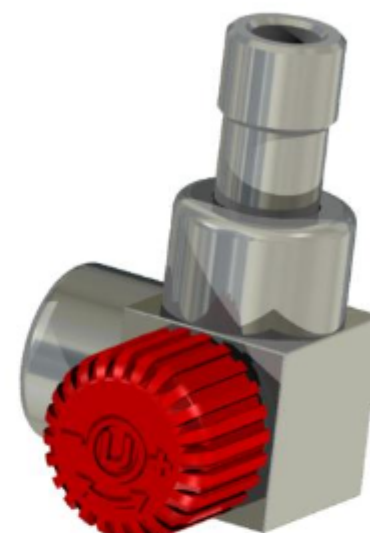


## DATA SHEET

### QUATTRO thermostatic valves



### APPLICATION

Thermostatic valves QUATTRO series are intended for installation on a radiator central-heating on the side of the power cord. Included with the thermostatic head regulate the amount of heating medium flowing into the radiator. By increasing the amount of hot water supplied to the radiator valve maintains the temperature in the room, and reducing the amount of flood water reduces the temperature.

This adjustment allows you to maintain a comfortable temperature eratury in the room regardless of the weather conditions prevailing on the outside, at the same time it contributes to a significant reduction in heating costs by reducing energy consumption.

The valve bodies of the QUATTRO series in the axial left or right version are designed in such a way that they blend in with bathroom radiators with vertical collectors square, and the thermostatic head used a "parallel system".

This allows the thermostatic head to be mounted parallel to the wall, inside the radiator outline, which protects it against accidental damage.

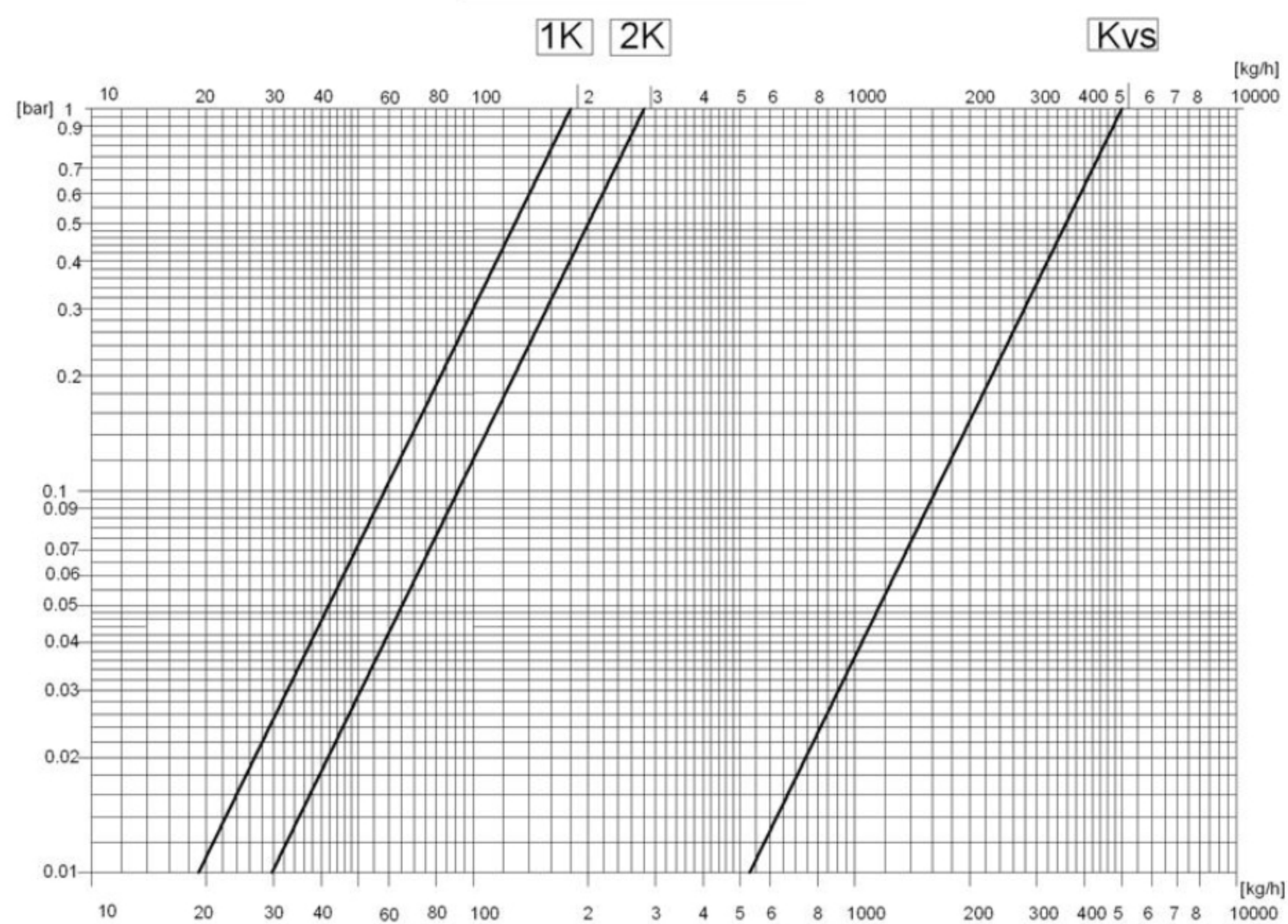
Recommended cooperation with Prestige GS.02 heads.

### SPECIFICATION

Working temperature	up to 120°C
Nominal pressure	1MPa
Heating medium	water
Max. differential pressure	0.06 MPa
Test pressure	1.5 MPa
Head mounting Presetting	M30x1,5
Radiator connection shut-off valve	R ½



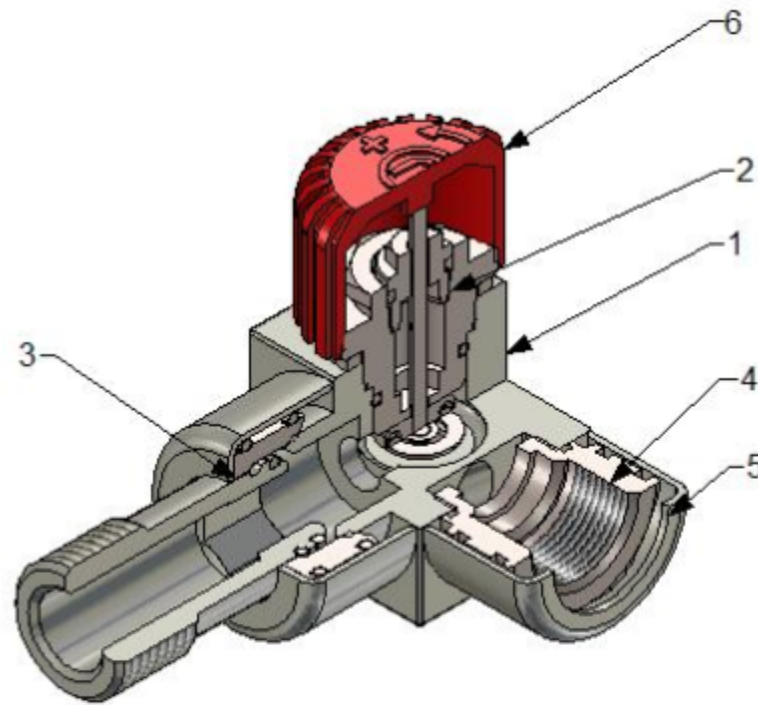
**Flow diagram for thermostatic valves of the QUATTRO series**



degree of opening the valve	1K	2K	KVS
Kv	0.18	0.27	0.50

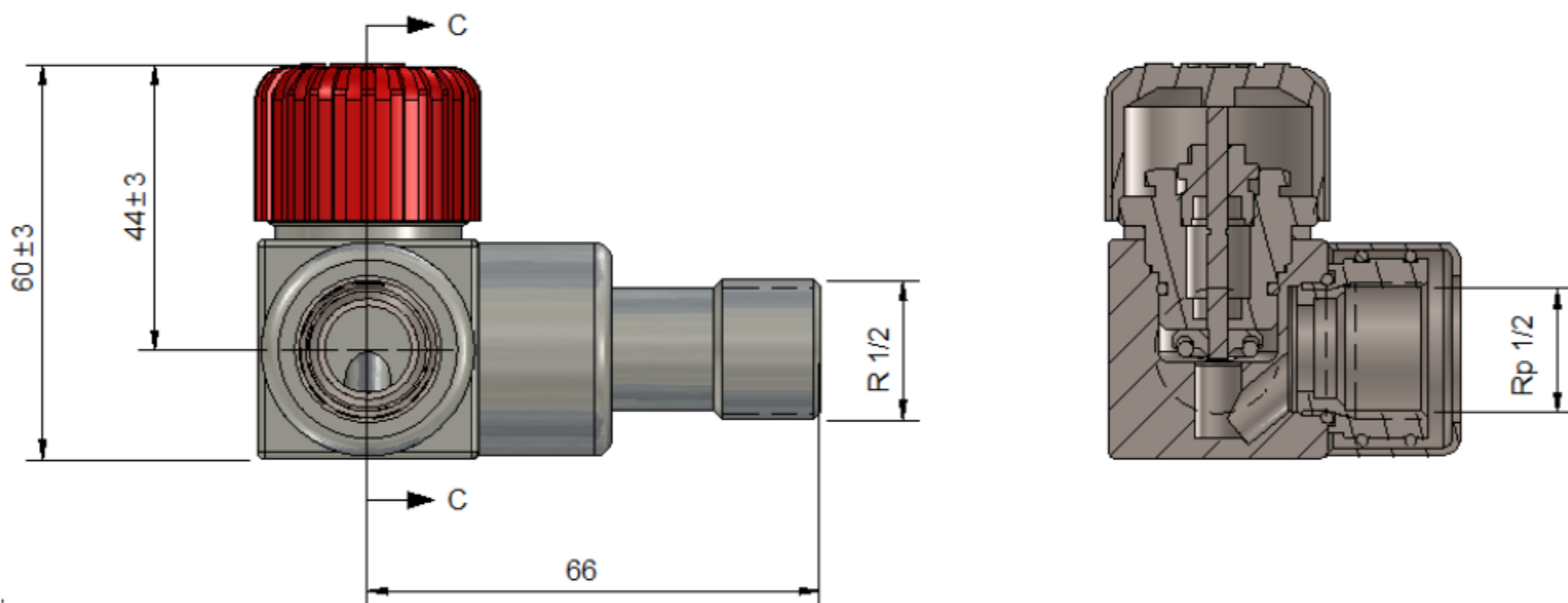
## Construction of QUATTRO thermostatic valve

1. Korpus valve QUATTRO
2. The contribution of the LUX thermostatic valve
3. Third connector R 1/2
4. Screw plug Rp 1/2
5. Rosette masking
6. Knob

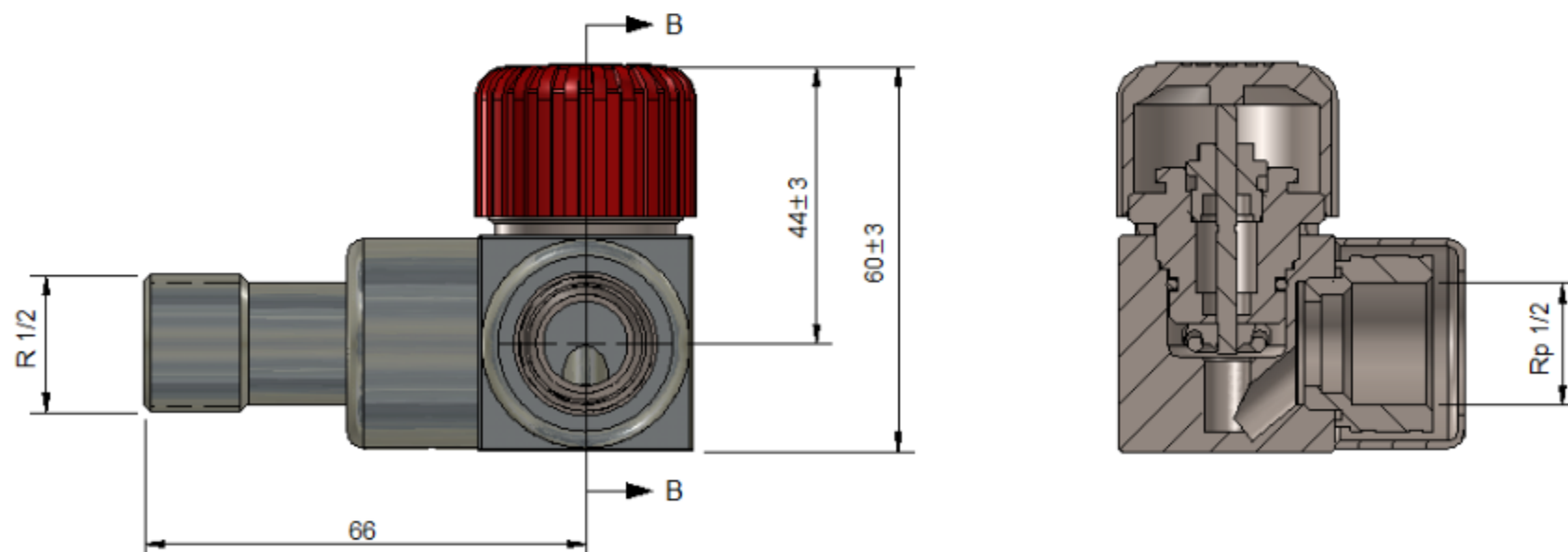


## DIMENSIONS

### QUATTRO thermostatic valve axially left



### QUATTRO thermostatic valve axially right



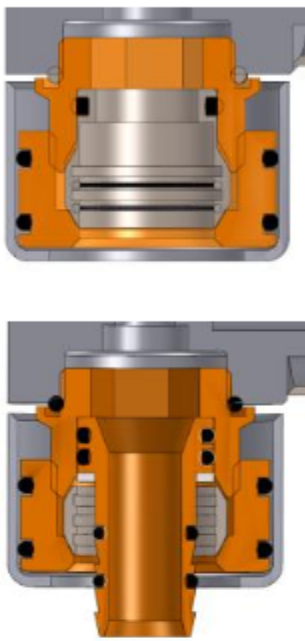






PERFORMANCE

All color performance available on [www.varioterm.pl](http://www.varioterm.pl)

ACCESSORIES CONNECTION

(useful for connecting the valve trim and aesthetic installation)

	Fitting Pex Cu 16x2 or 15x1
	Rosettes masking 1/2 "or 3/4"
	Extension GZ 1/2 "on GZ 1/2 " (various lengths)
	Extension GZ 1/2" to the GW 1/2 " (various lengths)
	Sleeve tube masking Pex / Cu (various lengths)