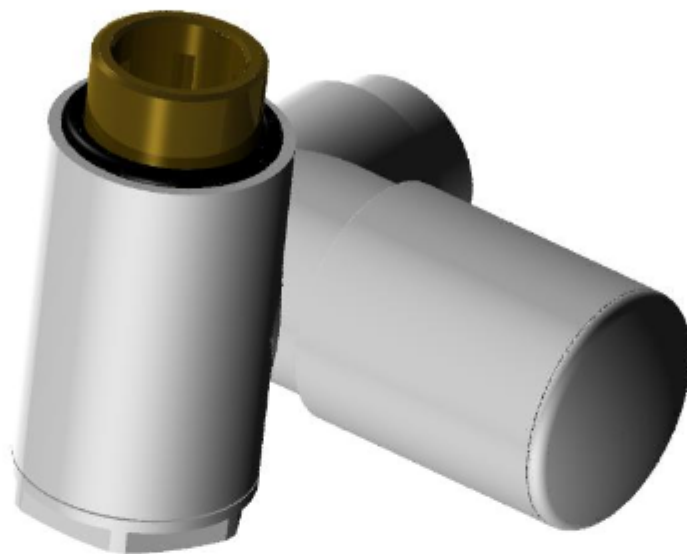


DATA SHEET

INTEGRA control valve



APPLICATION

INTEGRA control valve is designed for mounting on a radiator double-pipe system.

The valve's body is integrated with a T-piece allowing to connect an electric heater directly through radiator's valve (ideally through a lockshield valve). Using the manual control, which is mounted on a radiator's supply side, we can easily adjust the amount of heating factor flowing into the radiator. By increasing the amount of hot water supplied to the radiator the valve raises the temperature in the room, and by reducing it lowers the temperature.

This regulation allows to maintain a comfortable room temperature regardless of weather conditions outside, while contributing to a significant reduction in heating costs by reducing energy consumption. Lockshield valve is mounted on a radiator's lockshield side. It provides a precise balance of each radiator circuit, which improves heating comfort and better performance of the valves.



TECHNICAL DATA

| | |
|--------------------------------|-----------------------------------|
| Working temperature | 120°C |
| Nominal pressure | 1MPa |
| Heating factor | water |
| Max. pressure difference | 0,06 MPa |
| Test pressure | 1.5 MPa |
| Initial setting | on lockshield valve |
| Radiator’s connection | G ½ |
| Electrical heater installation | on lockshield valve (recommended) |



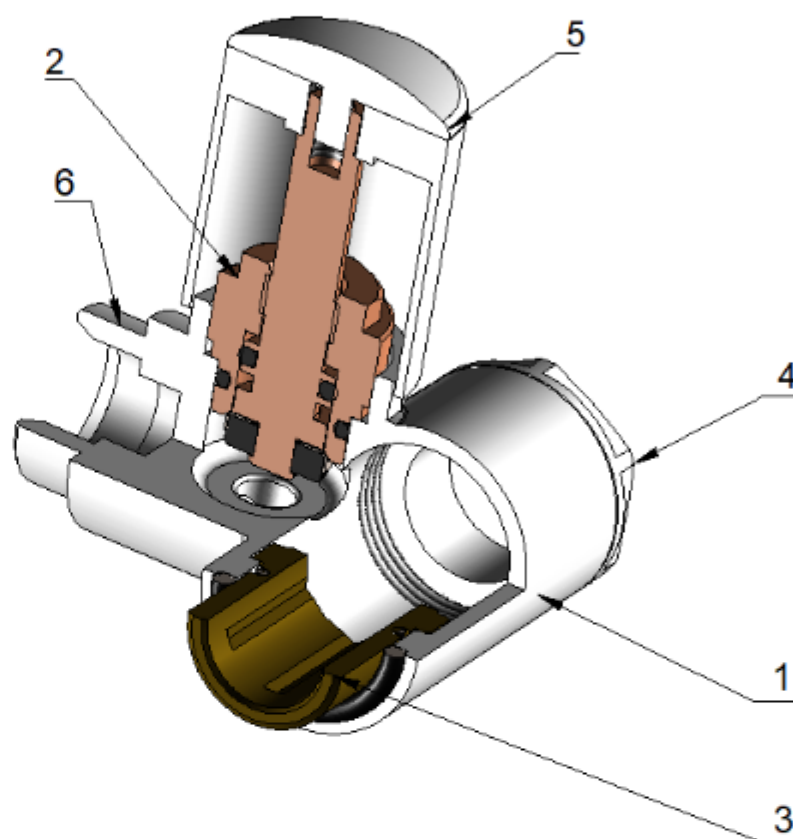
| | | | | | | |
|---|------|------|------|------|------|------|
| Kv value for number of rotations of the for lockshield valve's insert/regulating knob | | | | | | |
| number of revolutions in the direction of opening the valve | 2.1 | 1 | 2 | 3 | 4 | KVS |
| Kv | 0.07 | 0.10 | 0,18 | 0,30 | 0,38 | 0,65 |

Initial setting on a lockshield valve

Lockshield valves are pre-set in the open position. To change the initial setting, you must first turn off the lockshield valve, and then, starting from the closed position turn left the exact number of rotations, until the desired Kv value shown on the above diagram.

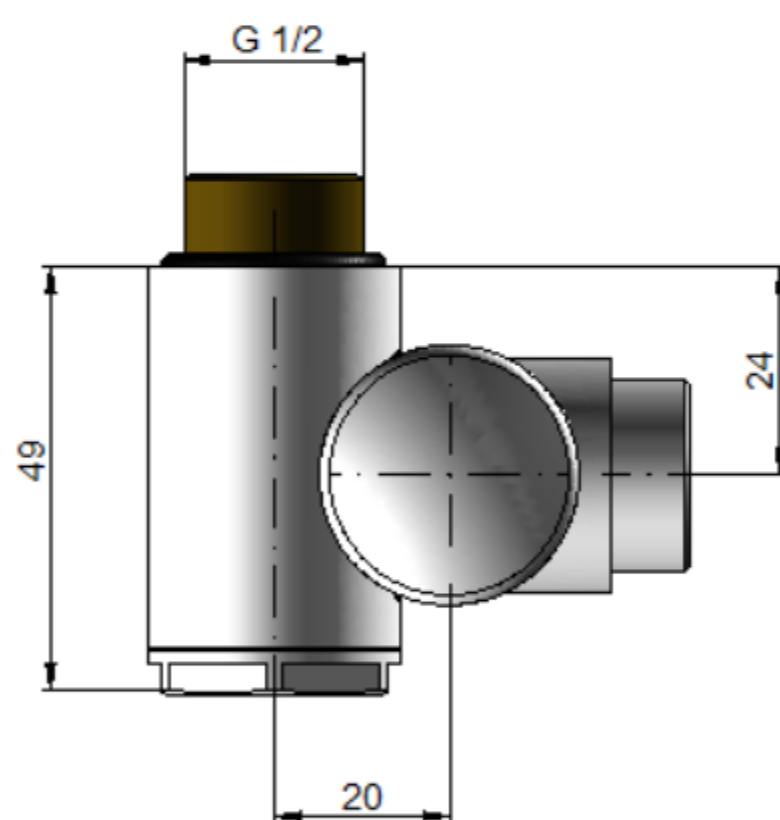
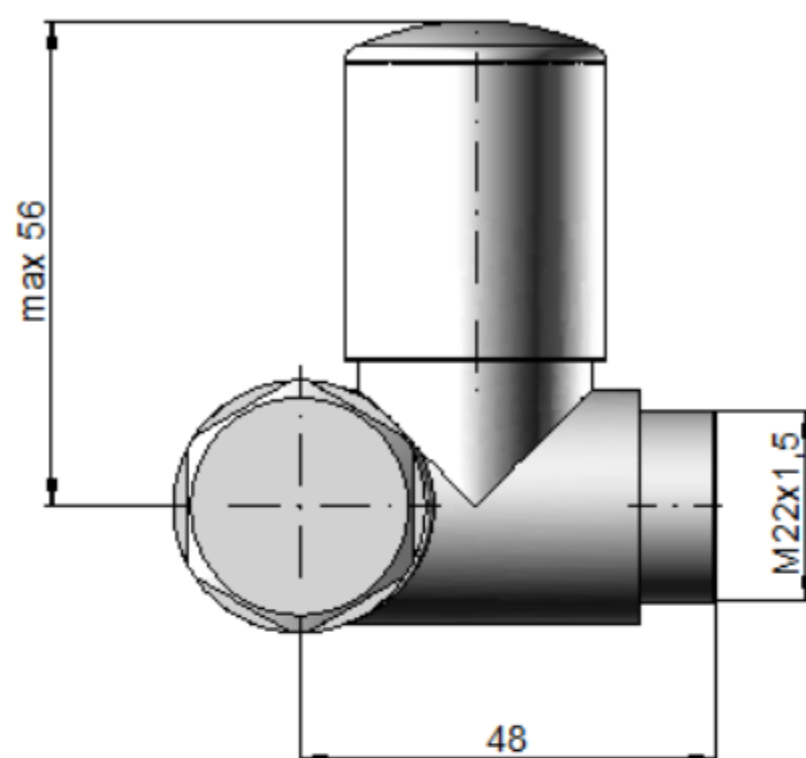
The construction of the thermostatic valve INTEGRA

1. INTEGRA valve body
2. Regulating insert
3. Mounting nut G 1/2
4. Cap
5. Regulating knob
6. The thread M22x, 15 at the connector installation (*)



(*) - standard connector is mounted on the PEX 16x2, it is possible to use the coupling for copper 15x1, or with an internal thread Rp 1/2 or external 1/2 G (type connectors selected ordering).

DIMENSIONS

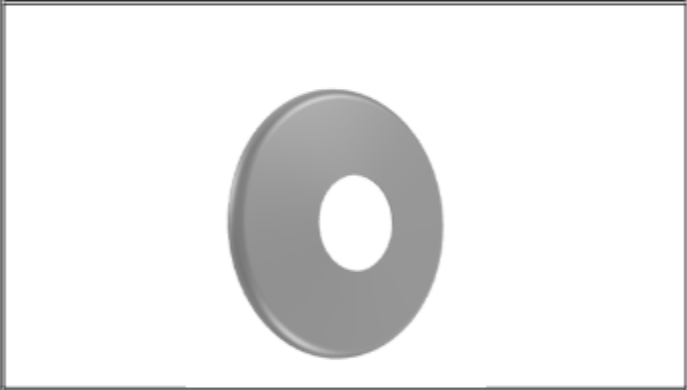
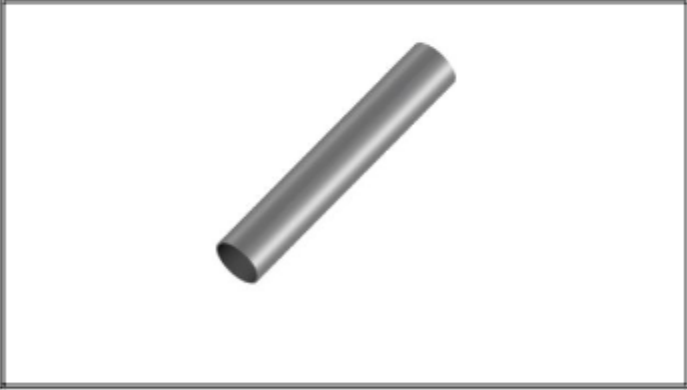


PERFORMANCE

All color performance available on www.varioterm.pl

connection accessories

(useful for connecting the valve and aesthetically attractive system)

| | |
|---|--|
|  | <p>Adapters: GZ 1/2 "PEX 16x2, 15x1, and Cu GW 1/2"</p> |
|  | <p>Rosettes masking 1/2 "or 3/4"</p> |
|  | <p>Adapters masking tube Pex / Cu (various lengths)</p> |